



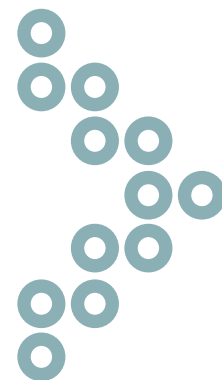
Glasgow and the Clyde Valley  
Strategic Development Planning Authority

## Annual Report 2020



Constituent Local Authorities of Clydeplan





## Clydeplan Joint Committee 2020

---



**Alan Moir**  
Councillor  
East Dunbartonshire



**Dennis Johnston**  
Councillor  
East Dunbartonshire



**Alan Lafferty**  
Councillor  
East Renfrewshire



**Stewart Miller**  
Councillor  
East Renfrewshire



**Glenn Elder**  
Councillor  
Glasgow City



**Kenny McLean**  
Councillor  
Glasgow City



**Jim Clocherty**  
Councillor  
Inverclyde



**David Wilson**  
Vice Convenor  
Inverclyde



**Agnes Magowan**  
Councillor  
North Lanarkshire



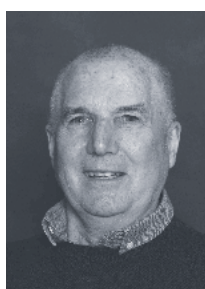
**Harry Curran**  
Councillor  
North Lanarkshire



**Marie McGurk**  
Councillor  
Renfrewshire



**Tom Begg**  
Councillor  
Renfrewshire



**John Anderson**  
Councillor  
South Lanarkshire



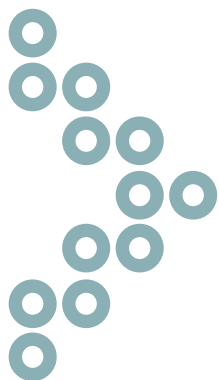
**Alistair Fulton**  
Councillor  
South Lanarkshire



**Jonathan McColl**  
Councillor  
West Dunbartonshire



**Lawrence O'Neill**  
Convenor  
West Dunbartonshire



---

## Convenor's Column

2020 has been a very challenging year for everyone. One of the outcomes has been a great appreciation of the environment around us. This growing recognition of the need to create quality places in terms of access to facilities and quality green spaces is at the heart of spatial planning.

Clydeplan has as a result put placemaking at the forefront of its support for the Scottish Government's development of National Planning Framework 4 and in particular in the preparation of its indicative Regional Spatial Strategy (iRSS).

The iRSS focussed on the key themes of the placemaking, economy, climate change, housing, sustainable connectivity and vacant and derelict land aligned to a Spatial investment Framework focussing on national important regional land use priorities of the Clyde Mission - Clyde Corridor, Ravenscraig, Eurocentral/Mossend, Forth and Clyde Canal and the City Region wide initiatives Metropolitan Glasgow Strategic Drainage Partnership and Glasgow and the Clyde Valley Green Network.

Clydeplan will continue actively seek to work with the Scottish Government as the work on the National Planning Framework continues through 2021.

During 2020 in support of creating better places and the drive towards a net zero economy Clydeplan has worked with Scottish Forestry in preparing the first Forestry and Woodland Strategy in Scotland under the terms of the new Planning (Scotland) Act.

The Strategy recognises the value of additional tree planting as part of the City Region's Green Recovery response to the current pandemic, some 18 million new trees will be planted over the next 10 years, as well as their value in addressing the challenges of climate change.

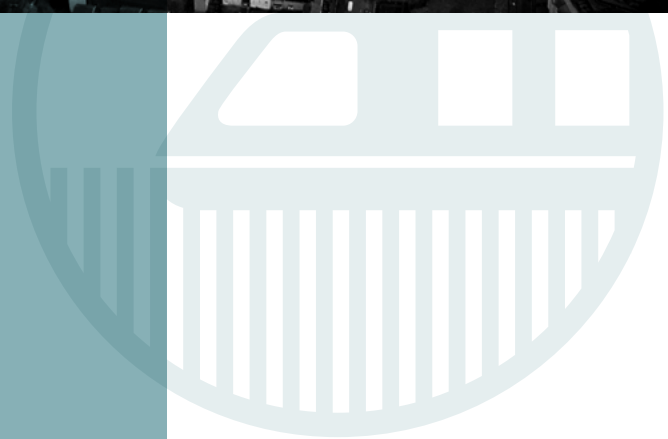
The Strategy also provides both the policy context to support forestry and woodland planting and management across the City Region as well as broad strategic locational guidance and environmental advice to those seeking to expand or manage forestry and woodlands across the City Region.

As the context for regional planning continues to evolve as a result of the Planning (Scotland) Act 2019 Clydeplan will continue to work with its constituent Local Authorities as part of the Glasgow City Region and look towards closer integration both in terms of regional spatial planning and wider City Region activities but also in terms of the future integration with the City Region's governance structures.

As Convenor of Clydeplan, I would encourage those with an interest in the future well-being of Scotland's largest city region to become involved with Clydeplan particularly as the new planning system comes into effect by ensuring regional spatial planning continues to support the creation of a City Region as a place where people wish to live, work and invest.

Councillor **Lawrence O'Neill**

**Convenor** Clydeplan







## Introduction

The eight Clydeplan Local Authorities are committed to strategic planning and working in partnership with a wide range of stakeholders in support of the delivery of its Vision and Spatial Development Strategy as set out in the Clydeplan Strategic Development Plan for the Glasgow City Region which was approved by Scottish Ministers on 24th July 2017.

The Clydeplan Strategic Development Plan provides the land use strategy upon which the Glasgow City Region can deliver growth for Scotland's largest city region and a context for its Local Authority Local Development Plans, Local Housing Strategies and Development Management decisions as well as supporting the Glasgow City Region's Economic Strategy 2017-2035.

The scale of work that has been undertaken by Clydeplan during 2020 has only been made possible by the willing support that it has gratefully received from both private and public sector partners.

These include the Scottish Government, Scottish Enterprise, Scottish Environment Protection Agency, Historic Environment Scotland, Strathclyde Partnership for Transport, Glasgow Airport, Transport Scotland, Scottish Forestry, NatureScot, Climate Ready Clyde, Glasgow and Clyde Valley Green Network Partnership, Clyde Marine Planning Partnership, Green Action Trust, Glasgow Centre for Population Health, NHS Scotland, Metropolitan Glasgow Strategic Drainage Partnership, Climate Ready Clyde, Scottish Water, Scottish Power, SGN, Virgin Media, Openreach, Homes for Scotland, Glasgow University, Strathclyde University and Heriot Watt University.

This report sets out the work that has been undertaken by Clydeplan and its partners during 2020.

Further information on the work of Clydeplan can be found at [www.clydeplan-sdpa.gov.uk](http://www.clydeplan-sdpa.gov.uk)



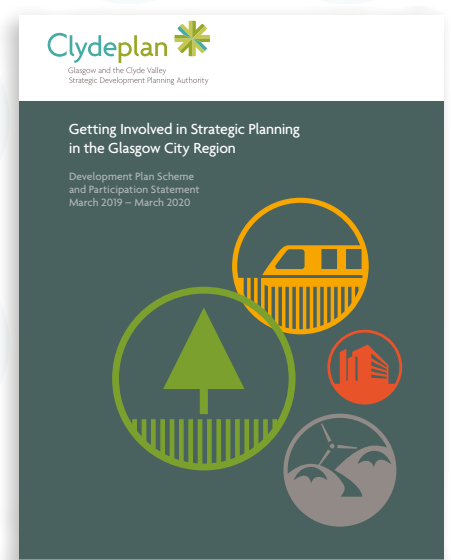


## Clydeplan Joint Committee

The Clydeplan Joint Committee met six times during 2020 in March, May, June, September, October and December. Details of the meeting's agendas, papers and minutes can be found at <https://bit.ly/2TAaTZo>

During 2020 the Joint Committee published its Annual Report 2019 and its Development Plan Scheme and Participation Statement 2020/2021.

In December 2020 the Joint Committee approved its revenue budget for the period 2020/21.



## Glasgow City Region

During 2020 Clydeplan continued its increased involvement in the work streams of the Land Use and Sustainability, Infrastructure and Assets, Housing and Equalities, Transport and Connectivity based portfolios and both the Economic Delivery Group and Economic Intelligence Support Group.

Clydeplan's involvement with the Glasgow City Region activities is likely to continue to grow and develop during 2021 particularly given the economies of scale and general benefits that can be gained through city region scale joint partnership working and the need to align activities in support of the development of a Regional Economic Strategy to the development of the Regional Spatial Strategy.

This regional joint working approach also supports the Planning (Scotland) Act which seeks the local authorities, working together, as regional partnerships in support of the delivery of National Planning Framework 4 and future Regional Spatial Strategies.



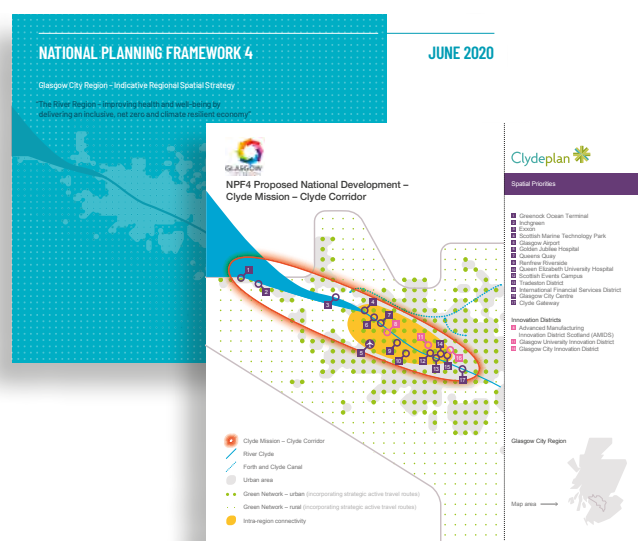


## Planning (Scotland) Act 2019 – Regional Spatial Strategies – Indicative Regional Spatial Strategy

The Planning (Scotland) Act which was enacted on 25th July 2019 removes the statutory requirement to prepare a Strategic Development Plan and replaces it with a duty for planning authorities to prepare and adopt a 'Regional Spatial Strategy' (RSS). The eight Clydeplan Local Authorities have agreed to continue to work together to prepare future RSS.

The formal duty to prepare a RSS will come into effect once NPF4 is approved which is likely to be in Spring/Summer 2022.

As part of the development of NPF4, Clydeplan approved and submitted an indicative Regional Spatial Strategies for the Glasgow City Region in June 2020. The iRSS was also endorsed by the Glasgow City Region's Chief Executive's Group and Cabinet and noted by the Glasgow City Region Regional Economic Partnership.



---

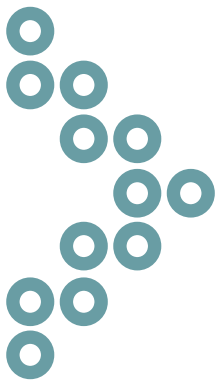
## Forrestry and Woodland Strategy

In December 2020 the Joint Committee approved the Forestry and Woodland Strategy for the Glasgow City. The Forestry and Woodland Strategy sets out the policy context to support forestry and woodland planting and management across the Glasgow City Region along with broad strategic locational guidance and environmental advice to those seeking to expand or manage forestry and woodlands.

The Forestry and Woodland Strategy reflects the ambition set out on the Scottish Government's Scottish Forestry Strategy 2019-2029 and the Glasgow City Region is the first Forestry and Woodland Strategy in Scotland framed within this new policy context.







## Clydeplan

Floor 2, Room 29, 40 John Street, City Chambers East, Glasgow G1 1JL

0141 229 7730 • [info@clydeplan-sdpa.gov.uk](mailto:info@clydeplan-sdpa.gov.uk) • [www.clydeplan-sdpa.gov.uk](http://www.clydeplan-sdpa.gov.uk) • [@Clydeplan](https://twitter.com/Clydeplan)